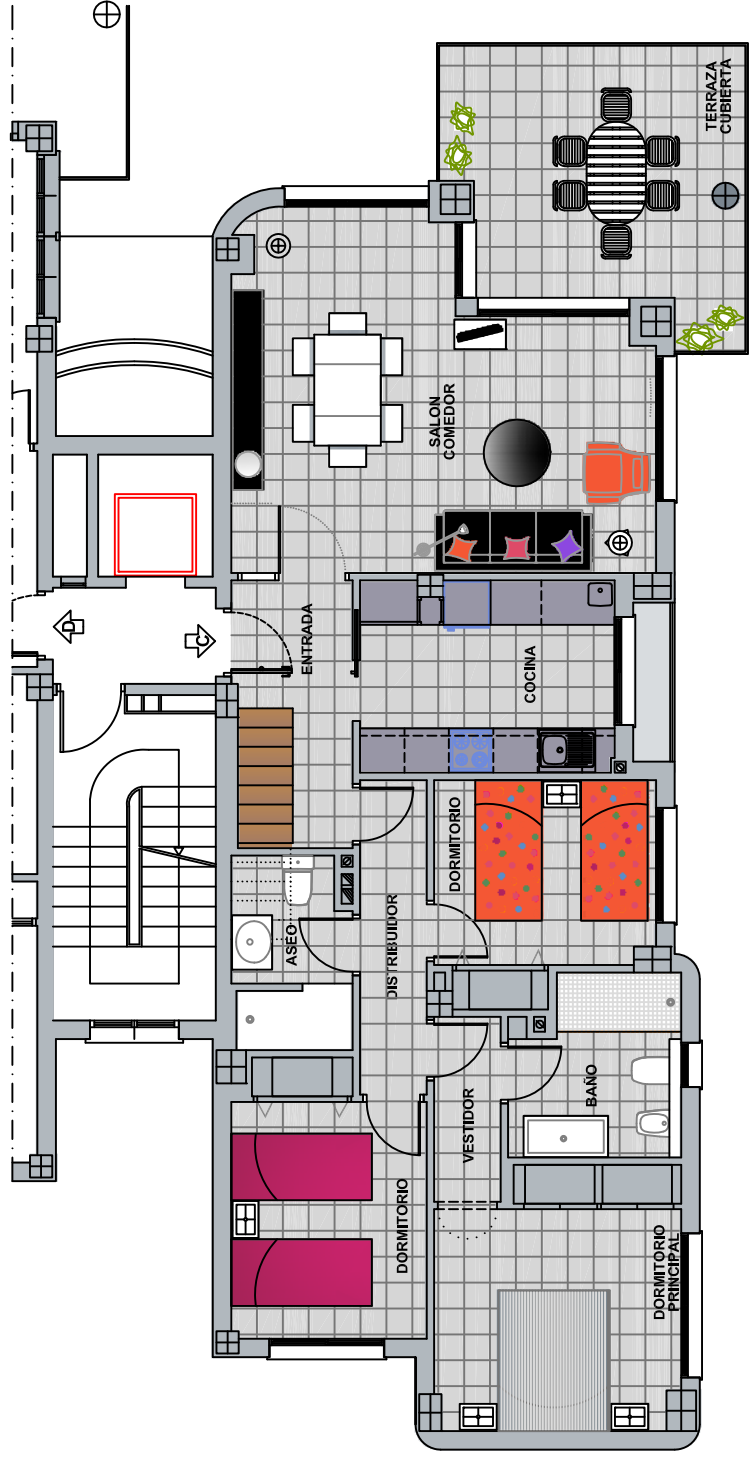




PLANTA 10



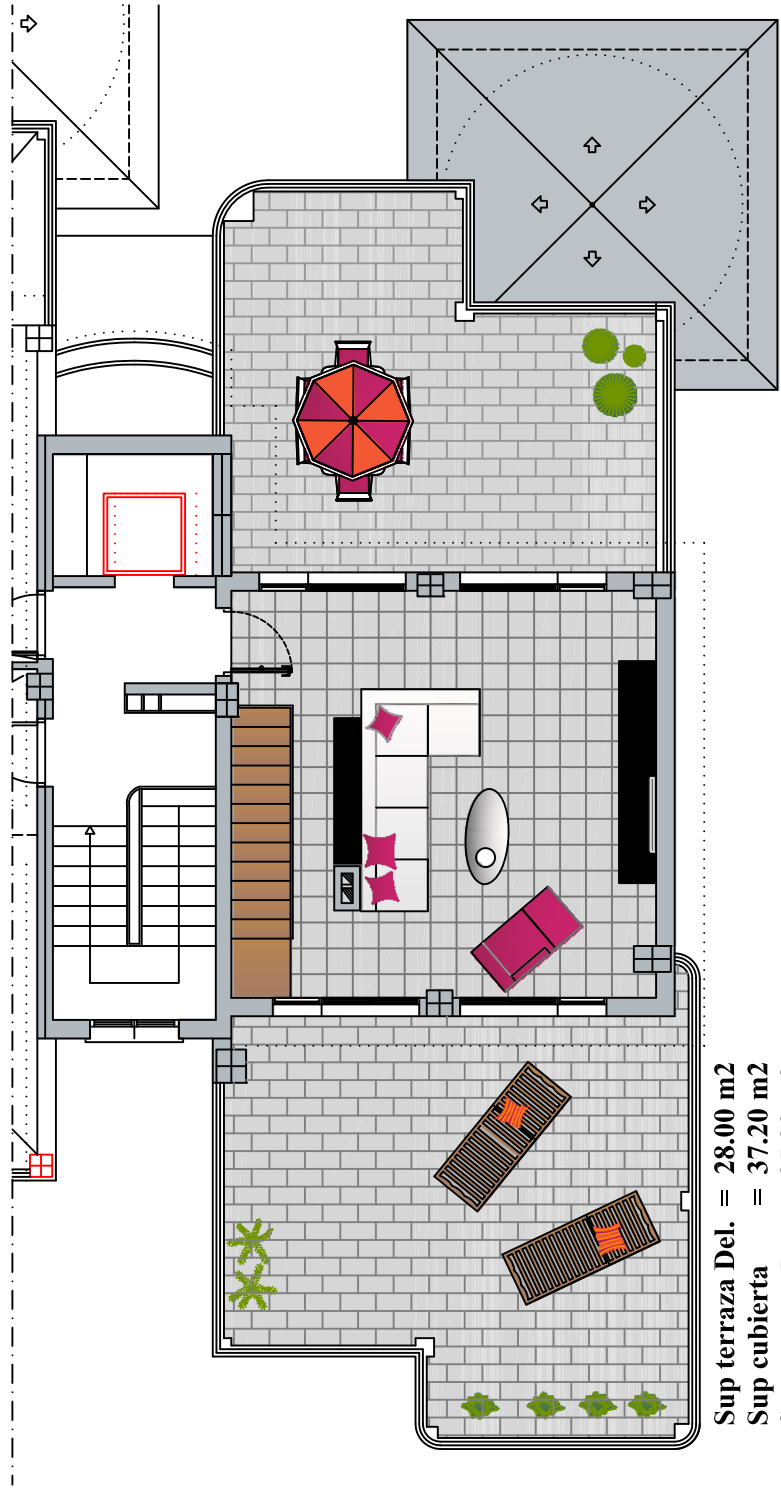
Sup viv.= 107.50 m²
 Sup terraza= 14.40 m²
 121.90 m²



ESCALA GRAFICA
 MLVSP,SL



PLANTA ATICO



Sup terraza Del. = 28.00 m²
 Sup cubierta = 37.20 m²
 Sup terraza Post.= 35.20 m²
 Sup Atico = 100.40 m²

