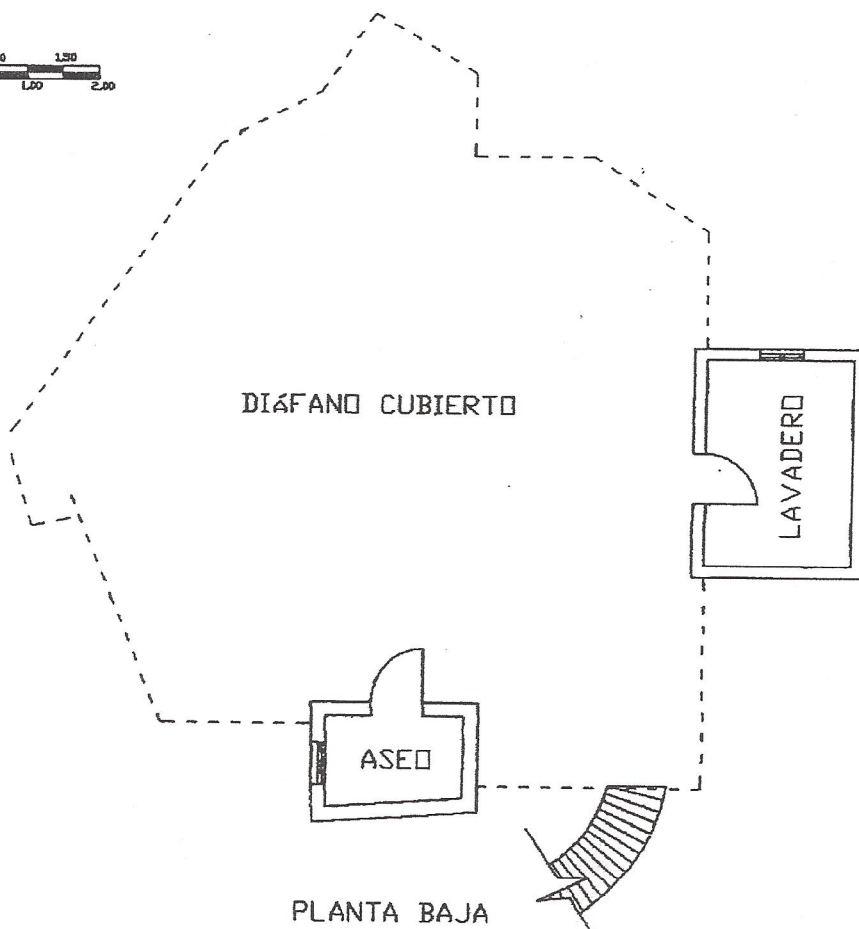
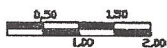
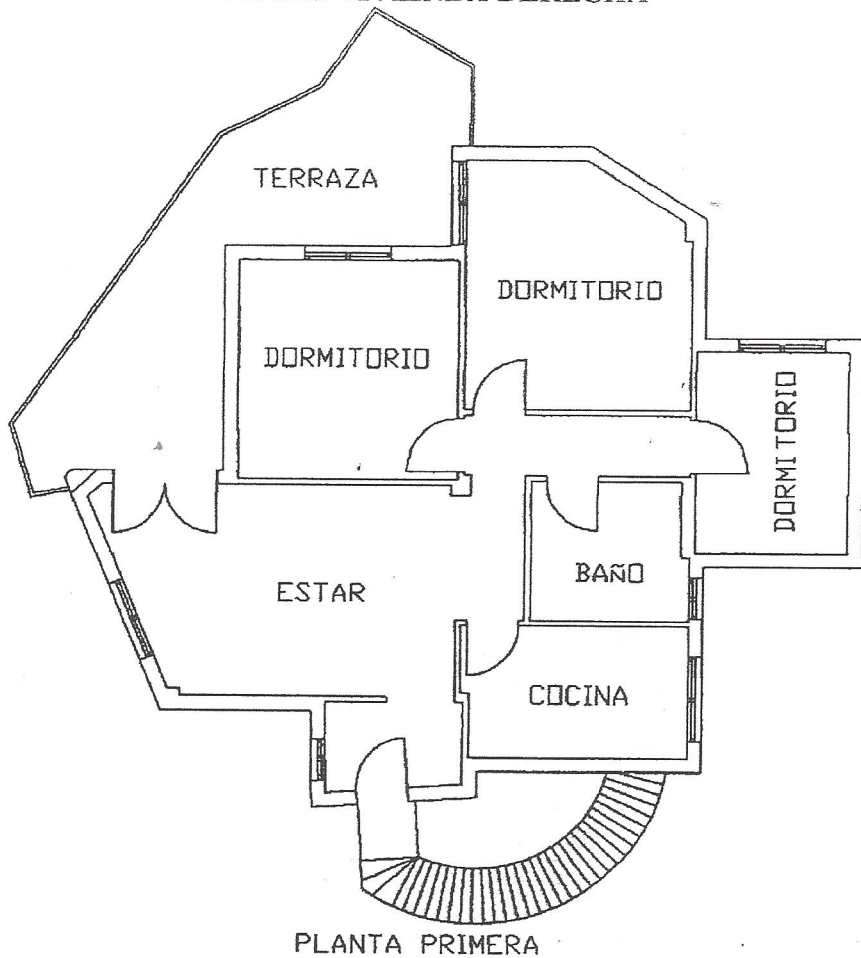
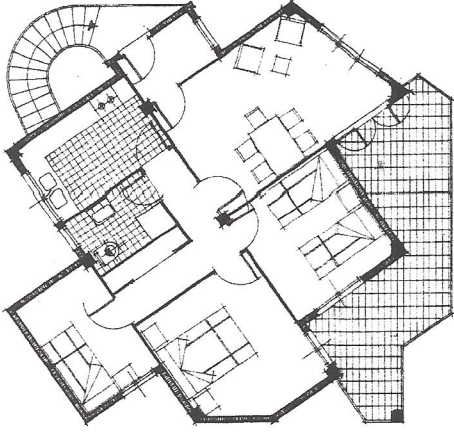


PLANO VIVIENDA DERECHA

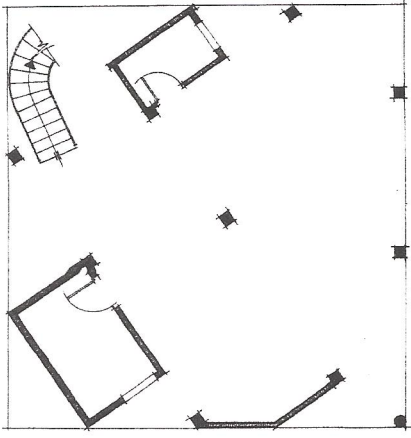




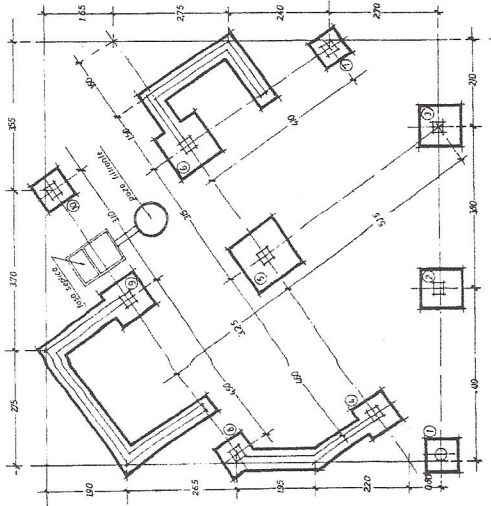
| | |
|---|------------------|
| ESTUDIO E. Casar ARQUITECTOS | PROYECTO N° 4983 |
| PROYECTO DE CHALET en Pedregal | |
| EMPRESARIO D. FERRAZ, CALANG | |
| Módulo N° 1 | PLANTAS |
| Inscripción No. 4002, 1983 | |
| LOS ARQUITECTOS | |
| <i>E. Casar</i> | |
| E. 1. 50 | |



PLANTA PISO

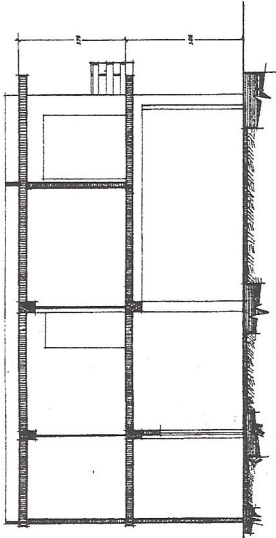


PLANTA BAJA

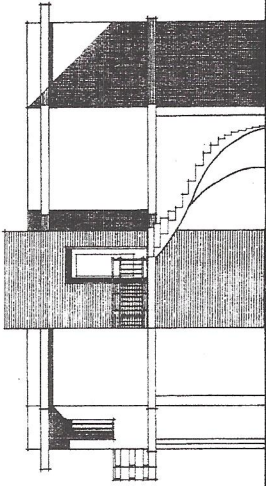


CIMENTOS Y SANEAMIENTO

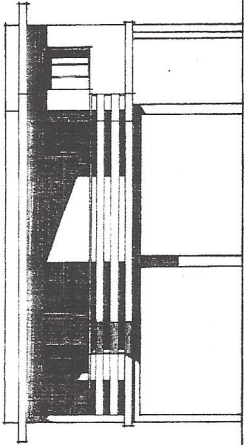
| | |
|-----------------------------------|---------------------|
| LOWRING & CRAIG ARQUITECTOS | Proyecto de 1963 |
| PROYECTO DE CHALET en Pedregal | |
| Hoja n.º 3 | ALZADOS |
| PREPARADO: Francisco Casavilla | Ámbito octubre 1963 |
| LE 130 | LOS ARQUITECTOS |



SECCION



FACHADA POSTERIOR



FACHADA PRINCIPAL